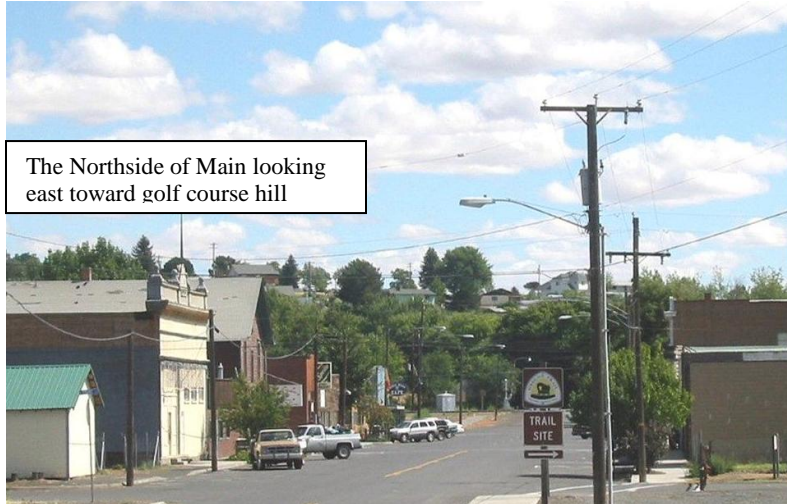


Historic Downtown Echo, Oregon

In 1920 downtown Echo was a bustling center with two commercial streets and a railroad right-of-way filled with businesses such as warehouses, a wool scouring plant and stockyards. Now Echo's downtown is work in progress—a mix of historic buildings and complimentary in-fill. The railroad property maybe vacant, but it offers a great deal of potential for development for interested entrepreneurs. The downtown retains an historic look and ambience with seven National Register of Historic Places

buildings and a dozen other locally recognized historic buildings.

Current downtown businesses are: the Echo Saloon, Red Express Bakery & Deli, C & D Auto, US Post Office, Golden Canyon/Echo West Vineyard Office, Echo Methodist Church, A Cut Above Beauty Salon, H & P Cafe, 2

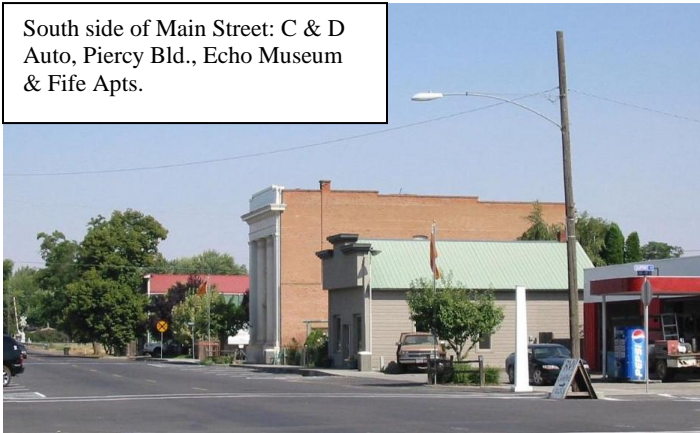


The Northside of Main looking east toward golf course hill

mini-storage businesses, 2 RV Parks, 2 museums, lodge halls, a fire hall, an apartment building, parks and the Echo Community Center.

Three of Echo's downtown buildings show the great potential that restored historic buildings offer a community, both in unique architectural style and functionality. The Echo Community Center was restored from the 1916 city hall building to create a modern city hall, library and auditorium/ball room while retaining the historical look and feel of the original building. The building also attracts visit-

South side of Main Street: C & D Auto, Piercy Bld., Echo Museum & Fife Apts.



The Red Express

ors who enjoy historic displays of vintage clothing, Native American Artifacts, artwork, Fort Henrietta/Utilla Indian Agency archaeological site displays, historic photographs and many other historic displays related to Echo's History. The Piercy family has restored a c. 1870 building that has been used as a grocery store, and school house and

given it new life as their ranch and vineyard office. Brie Piercy and Angel Ledesma completed renovation of the Echo Meat Market/Grocery building in the fall of 2006 and opened the Red Express. The Red Express now houses a bakery/deli-restaurant that offers an upscale, yet homey atmosphere for breakfast, lunch or an early dinner or to enjoy the wide selection of northwest wines and beers.

Echo's downtown offers opportunities.



Railroad land, south side Thielsen & Main intersection



right & left: downtown streetscapes

Over 7 acres of undeveloped land is located along the Union Pacific Railroad and State Highway 320, which is Echo's Thielsen & Main Streets. There are



other buildings and lots ready for infill on Main Street. Rental and property prices in Echo are much lower than those found in surrounding towns. Utility rates are reasonable as are connection fees.

In July 2007 the city and businesses adopted a downtown plan funded by an Oregon Department of Transportation grant. The plan focuses on enhancing and beautifying Echo's downtown while retaining the historic look and ambience that makes Echo and its downtown unique.

Echo has been involved in the America in Bloom program since 2006 and a number of improvements to parks, roadside landscaping and floral displays have been added as part of this project.

The downtown has a number of historic attractions for visitors. A



Main & Thielsen intersection looking south, railroad vacant property behind intersection landscaping

brochure provides a walking tour of 23 historic buildings and sites. On



weekends from April thru October the Echo Historical Museum is open, while the Echo Community Center/city hall has displays of vintage clothing, Native



American Artifacts, historic photos, Artifacts from the Fort Henrietta/Utilla Indian Site and other historical displays. The Fort Henrietta Park is a National Register of Historic Places site with a Covered Wagon Museum and Antique Fire Equipment Museum. These unmanned museums/displays have push button



controllers that provide information about the displays available from dusk to dark.



1. Covered Wagon Museum, Fort Henrietta Park;
2. Vintage Clothing Display, City Hall;
3. Main Street Wagon;
4. Main Street Tree Well & planter,
5. Echo Church planter;
6. Echo Museum & City Hall;
7. Museum Garden Upgrades.