



## WELCOME

**Utilities:** The base rate for residential **water service** is \$29.00 for up to 3,000 gallons. This is the minimum charge. Meters are read on or about the 15th of each month, March through October. You will be billed on the first of the month following the reading. During the



winter months, we do not read meters and you are billed the minimum of \$29.00 per month.

Any usage above 3001 gallons per month used during the winter is billed with the April 1 billing. Usage over 3,000 gallons each month is billed at \$.65 per 1,000 gallons.



Please do not park on top of, or so close to your meter so that the meter reader is unable to access your meter, especially between the 15<sup>th</sup> and 22<sup>nd</sup> of each month. Ongoing blockage of the meter will result in a fine,

**Residential Sewer service** is currently \$45.00 per month. Commercial customers who use over 20,000 gallons of water per month will be charged an additional \$.30 per 1,000 gallons over 20,000 plus the base rate.



**Garbage rates** (effective Jan 1, 2013) are \$9.60 per month for a 35-gallon container provided by Sanitary Disposal, Inc. and \$16.20 per month for a 90-gallon cart.

Garbage is picked up early Thursday morning, so please put out your garbage the night before. Please use garbage sacks.

**Late Charges:** any account not paid in full by the 25th day of the month will be charged a \$10.00 per month late fee each month there is a balance due. Any account not paid in full by the 25<sup>th</sup> of the month billed will receive a shut-off notification giving until the 15<sup>th</sup> of the following month to pay. If not paid by the date printed on the shut-off notice, the account will be disconnected & garbage stopped.

**Deposit/Turn off/on fees: Property Owner:** (proof of ownership required): \$75. **New Customer/Renter:** \$150. **Returning Customer In Good Standing:** \$75. "In Good Standing" is a customer who 1. Paid off account balance within 60 days of vacation; 2. Received no more than three (3) delinquency notices in the last calendar year; 3. Was never disconnected for failure to pay. **Customers who have had accounts in the past and who left a balance or had poor credit are required to pay a \$200 deposit. In Poor Standing:** 1. Returning



customers who left owing a balance and/or 2. had 3 or more overdue notices in the last year of service; 3. Were disconnected for failure to pay.

**Any/All** outstanding funds owing the city must be paid before an account will be established and service connected.

All customers must complete an application for service. Deposits will be kept by the city until the customer moves out or until service is disconnected for failure to pay. However \$30 of all deposits is non-refundable. If water is shut off for nonpayment the deposit (less the \$30 non-

refundable deposit) may be transferred to pay off the account balance and a new **\$200 deposit** will be required. Also the account will have to be paid in full before service is restored. The following charges will be assessed to disconnect/restore service whenever the water is turned off: During crew work hours (8:30 am to 3 pm)-\$30 Monday through Friday, except holidays. After Hours/Holidays-\$60.

Temporary turn offs, (for repairs to plumbing) usually are not charged a reconnect fee if performed during work hours, and if the crew only makes one trip to turn the water on and off within a 3 day period. **Anyone turning on water that has been turned off or disconnected by the city without obtaining prior approval will be charged with theft of services and violation of the city utility code.**

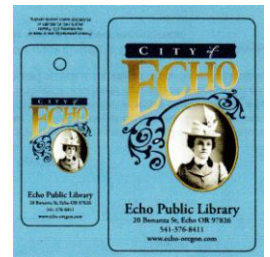
**Dog Licenses:** The city's dog control ordinance requires that all dogs be kept confined to your property unless on a leash and that any animal over six months old be licensed (rabies shots cannot be issued until the dog is approximately 6 mos. old). Proof of a current rabies vaccination is required before a license can be issued. The license fee is \$12 per year unless the dog is spayed or neutered, in which case the fee is \$4. Licenses are issued for the period from January 1 through December 31. If you move in during the middle of the year, you are still required to license the pet within 10 days, but the fee will be prorated. It is also a violation of the dog control ordinance to allow dog(s) "*to make prolonged noise*", i.e. barking.



A one-time warning may be mailed when the city receives a complaint.

However if the problem persists the complainant must sign a formal complaint and then a citation into municipal court will be issued. The maximum fine is \$250 plus state court assessments. To make a complaint you need to provide the name of the dog's owner and/or address, time and date, as we cannot, of course, serve the dog.

**Library:** The library is located in city hall. It is open Monday-Friday 9 am to 5:00 p.m. and Wednesday evening until 8:30 pm. It will be closed during court sessions. The library is part of the Umatilla County Special Library District and as such patrons can borrow library materials from other district libraries as well as most other libraries in eastern Oregon.



Please check in at the office before entering the library. To obtain a library card, you will need to bring in a current picture ID such as a driver's license. The library offers videos, audio books and public access computers with Internet access, as well as books. Large collections of local history and Oregon Trail books, antique books, books on trees and fire fighting are housed here. A large collection of Vintage Clothing and accessories also is housed here and displays are scattered around the building.



**Police:** The city contracts for police protection. **For emergencies only dial 9-1-1. Otherwise phone 966-3651** to reach the county dispatcher. An emergency is not a barking dog, or a robbery that happened the night before. Please do not tie up the 9-1-1 lines with non-emergency calls.

**Recycling:** Newspapers, cardboard, tin, aluminum and glass can be recycled at the city-recycling center located between the post office and Masonic Lodge. Further information is available directly from Sanitary Disposal, Inc. 567-8842.

**Fire:** The Echo Rural Fire Protection District provides fire protection. This is a volunteer fire department. It is not a part of the City of Echo, but is a separate tax district with its own board of directors. **For emergencies call 9-1-1.** The city does not set policies or enforce burning regulations.) If using a burning barrel, you must have a good screen with no holes. Any-one burning rubber, diapers, plastics, toxic substances, non-combustibles or commercial quantities of paper or cardboard may be cited.

**Oregon Trail Arboretum:** The arboretum is located just east of the School football field at the end of Neely Lane (named for the late Arnie Neely, Echo Public Works Sup. from 1983 to 2004, who died on October 29, 2004). You are welcome to walk around the site, enjoy the trees and tree boards. Further information on suitable ornamental trees or trees growing in the arboretum is available from Diane at City Hall. The library has a large collection of tree reference materials to aid in selection. The arboretum and all city parks close at dark. Memorial trees and donations are welcome and are listed on plaques, which hang in the bulletin board at the entry.



**Echo Hills Golf Course:** Our municipal nine-hole golf course is located on the east side of town. Rates are among the lowest in the area and residents of the City of Echo receive a membership discount. Tee times are required on weekends. The course offers golf cart and club rentals; a proshop; snack bar; driving range; Manager: Randy Sperr; Phone 376-8244;



**George Park:** The George Park is the park located behind city hall. The park and gazebo can be used for weddings and other events. There is a charge for reserving the park and renting benches. The park closes at dark and no alcoholic beverages are allowed without council authorization.

**Echo City Hall Auditorium/Community Center:** The Echo city hall building was constructed in 1916 and renovated in 1999. Besides housing the library and city hall offices the second floor is an auditorium, which can be rented for weddings, receptions and other events. A contract and rate sheet is available at the office and on the city web site [www.echo-oregon.com](http://www.echo-oregon.com).

Historical displays and antiques are scattered throughout the building.

**Masonic Lodge Community Room:** The city has obtained a lease from the Echo Masonic Lodge of the ground floor of the Masonic Lodge. This allows the ground floor/community room to be used by the public and Echo organizations at a minimal fee for meetings, showers, funerals, dinners, etc. Please contact city hall for the latest rates and rental information. Ph: 376-8411.



**America In Bloom:** The city has been competing in a program called America in Bloom that promotes community beautification and livability since 2006 and won the smallest city category in 2009, 2010 & 2013. As a result the city

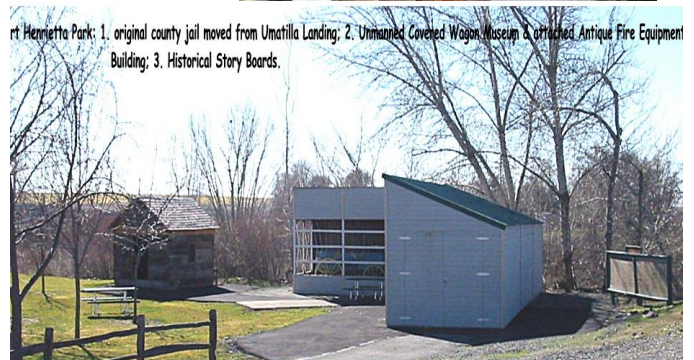


encourages the community to help with beautification efforts through an annual Beautification Contest and takes a strong position against nuisances and unsightly areas in town. In 2011, the Dahlia was selected as Echo's Official Flower.

**Fort Henrietta RV Park & Campground:** The city owns and operates the Fort Henrietta RV Park located at the end of Main Street along the Umatilla River. Six spaces with water, sewer, /electricity & cable are available for nightly or weekly rental. Two pull thru spaces with water and electricity are also available. Camp Hosts Gloria and Gilbert Rodriguez are lo-cated in the RV located next to the restroom and can provide rental information and rates. PH: 541-571-3597.

**Fort Henrietta Historical Park:** The Fort Henrietta Park is located between Main & Bridge Streets along the Umatilla River. The National Park Service has named the park a National Historic Oregon Trail Site because it was the site of the Lower Crossing & campground on the Oregon Trail and was mentioned in many Oregon Trail Emigrant Diaries. Besides picnic facilities, the park is the site of a number of historic displays:

- **Blockhouse:** replica of fort-style blockhouse such as may have been at Fort Henrietta. The National Park Service provided the two interpretive panels next to the block house.
- **Covered Wagon Museum:** unmanned display of covered wagon and type of items that would have been loaded in the wagon; interpretive panels provide further information as do push button controllers
- **Fire Museum:** Echo's collection of antique fire equipment is on display and push button controllers provide information about the equipment and history of fire fighting.
- **County Jail:** The puncheon log building in the park was the original county jail located in Umatilla in the 1860s and moved to the Cunha Ranch across the river from the park where it was used as a smokehouse. It was moved to the park a few years ago and reconstructed.
- **History Boards:** Two panels provide information about the history of Echo.
- **Skatepark:** The park includes a concrete skatepark bowl and modular units.



**Upgrades:** A picnic shelter and restroom was added to the park in 2013 and a playground structure was completed in 2014.

**Chinese House OR & N Museum:** This museum is located across the street from city hall on the corner of Bonanza and Bridge Streets. Railroad tools and artifacts representing the Chinese Railroad Laborers, historic photographs and Echo advertising items are among the items on display at this small museum. The museum is open by appointment only. Call city hall at 376-8411 M-F from 10 am to 4 pm to make an Appointment.



**Other Organizations and Businesses:**

Masonic Lodge	567-2565	Echo Cemetery	571-2426
Methodist Church	376-8108	Echo Museum	376-8400

Fort Henrietta Foundation (local historical society)	376-8411	Echo Boosters (promotes town, Christmas & charitable activities)	376-8411
H & P Cafe	376-8573	Fort Storage	922-4518
Post Office	376-8351	City RV Park	571-3597
Oregon Trail Honey Farm or Desert Springs Bottled Water	376-8345	C & D Auto	376-5500
Echo Garden Club (meets 3rd Tues.)		Echo Quarterback Club	
Echo School	376-8436	Kiwanis	376-5588
Sno Road Winery	376-0421	Echo Secured Storage	376-4444
Echo Bike & Board	289-2844	A Cut Above	376-5504
His Design Thrift & Gift	376-5556	Gathered Over Time Antiques	1-509-948-1851

**City Government:** Mayor Richard Winter **Council Members:** Jeanie Hampton, Pat Wood, Jerry Gaunt, Karl Jensen, Gayle Yoder.

**Souvenirs/books:** Echo souvenirs can be purchased at city hall. These include T-shirts with the image of Echo Koontz. Echo was named for her. Historical Books on Echo. Greeting cards & post cards with photos of the Echo area and Echo mugs.

**Area Attractions:**

**Echo Downtown**—Echo’s Main Street underwent a major transformation in 2012. A number of grants provided funding to widen sidewalks, develop custom benches, planters & bike racks & add Vintage Style Street Lights. The City is working to add Public Art to the downtown as part of the transformation. Donations for the project can be made at City Hall. Donations over \$50 will be recognized on plaques.



**Oregon Trail Ruts**--east and west of town--maps/guides available around town;

**David Koontz Gravesite** (an Oregon Trail emigrant who died along trail) interpretive panel;

**Cemeteries:** Echo Cemetery/Nolin/Foster & Baumgardner pioneer cemeteries are located in or near Echo. All feature interesting old gravestones. The large Cunha Plot cross is one of the most notes features of the Echo Cemetery. The cemetery offers wonderful views of town. The Oregon Trail Guide at city hall provides directions to all but the Nolin Cemetery.

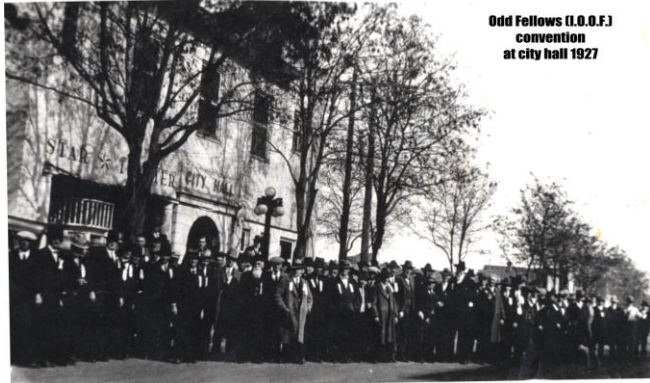
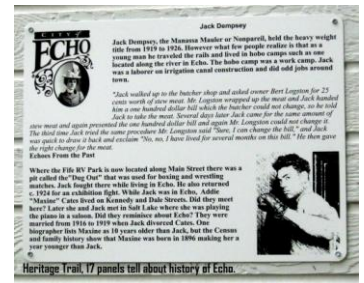
**Echo Historical Museum:** The museum is housed in one of the ten National Register of Historic Places buildings in Echo. It was constructed in 1920 and was the Echo Bank. Displays include pioneer implements and relics, historic photographs and newspapers, Native American artifacts. The museum is operated by a volunteer board of directors and is open May through September on Friday & Saturday afternoons and by appointment.



**Historic Building Walking Tour & National Register Properties**—Ten Echo properties are on the National Register of Historic Places. These historic sites are: City Hall, St. Peter’s Catholic Church, Echo Methodist Church, Koontz House, Cunha Farmstead, Koontz Building, Echo Museum, Masonic Lodge, Echo Hotel, Edwards Building;



A brochure is available at city hall and Echo businesses that provides information on these historic buildings as well as other historic buildings in the central commercial district and northwest section of town. There are 19 panels scattered around town that form a “Heritage Trail” with information on the history, people and events of early Echo.



Odd Fellows (I.O.O.F.) convention at city hall 1927

**Farm Equipment:** Vintage Farm Equipment has been restored and signage telling about the equipment added to a display at the North end of town at Thielsen (Hwy 320) & Dupont.

**Sno Road Winery:** Main Street.541-376-0421 email: info@snoroadwinery.com <http://piercyfamilyvineyards.com/>. The winery event center and tasting room moved into the newly restored National Register of Historic Places Koontz Building

on Main Street in 2013.

**TREE CITY, USA:** The City of Echo is Oregon's smallest Tree City and one of only 3 Tree Cities in Eastern Oregon (Echo, LaGrande & Baker). Echo's involvement in this program has been constant since 1989. The city operates a number of Programs as part of the Urban Forestry Program For the 20<sup>th</sup> anniversary as a Tree City, the Red Horse chestnut



was named Echo's Official Tree.



**NATIONAL NIGHT OUT:** National Night Out is the first Tuesday in August in the George Park each year. Prizes for the Beautification Contest are awarded during NNO. The event is free.

**HALLOWEEN:** The City and Echo Boosters host an annual Free Halloween Party for youth every Halloween upstairs at city

hall. The event is free and includes hot dogs, beverages, prizes, etc.



**Website:** Check out our website [www.echo-oregon.com](http://www.echo-oregon.com) for more information on Echo and its history. Links to the city code, cultural resource guide and city newsletters are found here.

Box 9 - 20 S. Bonanza - Echo, OR 97826 - (541)376-8411 - Fax (541)376-8218 - [www.echo-oregon.com](http://www.echo-oregon.com) [ecpl@centurytel.net](mailto:ecpl@centurytel.net) [ecpl@centurytel.net](http://ecpl@centurytel.net) revised 1-20-14