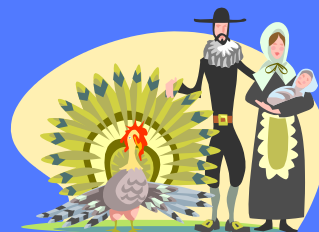


# The Echo



Nov. 2010

Published by the City of Echo

PO Box 9/20 S Bonanza-(541)376-8411

## Querencia/Sense of Place

In his book The Rediscovery of North America, Oregon author Barry Lopez uses the term '*querencia*' to refer to a place from which one's strength of character is drawn. In Spain, *querencia* is the place in the ring where the wounded bull goes to renew his strength and center himself, ready for a fresh charge.

The public is invited to attend a special Free *Querencia* program on Tuesday, November 16, at city hall from 7 to 8 pm to read aloud or discuss what

place means to them.

Pamela Steele, Echo Library Board Member and author, will facilitate the program and will read some of her work, including an article featured in Libraries of Eastern Oregon's Sense of Place Anthology of Eastern Oregon Writers published last fall. Attendees are encouraged to read briefly from their own works or to bring works from their favorite writers that pertain to the theme of place – whether physical place or mental place of well-being. Others are welcome to come and listen.

The Oregon Committee for the Humanities, Echo Library & LEO are sponsoring the program. Refreshments will be served.

Copies of the Sense of Place Anthology will be available for purchase. The cost is \$12.95. This 226-page collection of juried po-

ems, essays and short stories by dozens of residents across eastern Oregon and a few outside poets who pay tribute to the region has been endorsed by Oregon's poet laureate, Lawson Inada.



## Holiday Closures

**Veteran's Day:** City Hall will be closed on Thursday, November 11, 2010.

**Thanksgiving:** City Hall will be closed Thursday & Friday, November 25 & 26 for the Thanksgiving Holiday.



## JudgesReport

*"The judges give you more kudos for your 21 years as a Tree City USA, the State of Oregon heritage preservation award, four America in Bloom entries, a LivCom Bronze award and others....Returning judge Dwight Lund was pleased to see versions of suggestions made in 2006...evaluation being used."* Comments and suggestions on the first four categories are included this month.

**Tidiness Suggestion:** Screen the recycling facility from Dupont St. & the park. Use of

Category	Points	Possible Pts.
Tidiness effort	105	125
Environmental	103	125
Community Involvement	107	125
Heritage	114	125
Urban Forestry	72	95
Landscaped areas	79	95
Floral Display	108	125
Turf & ground cover	76	96
<b>Total</b>	<b>764</b>	<b>911</b>

planter  
boxes  
like  
those on  
Thielsen  
Street, a  
faux  
“False  
Front”



like on historic building or a 6 or 8 foot fence decorated with murals, possibly done by school children. The judges were pleased to see the recommended trash receptacles and cigarette disposal units.

**Residential Tidiness Suggestions:** “The



*judges suggest that neighbors get together and become “Weed Warriors*

*to improve the appearance of the area [Thielsen Street].*

**Environmental Comments:** “The city of Echo is a model of Environmental Stewardship.” Examples: Skatepark storm water pumped to “dry creek”; Drip irrigation used in landscapes; Distribution of seed packets and trees at Arbor Day; Use of Energy Star qualified fluorescent light bulbs in place of incandescent lights in city buildings; 5th grade class recycling efforts; Suggest use of more Native Plants and groundcovers and mulch.

**Community Involvement:** The judges praised the city newsletter, the School Community Service Day, “We Noticed” program and Kiwanis Cleanup Day. Suggested holding a judged skateboarding competition that can be developed into a tourist event. The contributions of the Piercy family through renova-

tion of buildings and development of the 21 mile mountain biking trail on their land which attracted 350 participants in the 2nd annual Red to Red Race & which is attracting cyclists to town on a regular basis.



## L-Net

Do you need a question answered, help with a research paper or school project? Free help is available from L-Net/Oregon Libraries Network. Live

Chat is available with professional research librarians 24/7 or you can email a question or even text one at: <http://www.oregonlibraries.net/>

**About L-Net:** Librarians online work at libraries all over Oregon. Evenings, weekends, and early mornings you will be connected to librarians all over the United

## Coleen’s A Cut Above

Come in & take a look at the new & improved shop. We have expanded & remodeled.

**New Services: eyebrow waxing & facials.**

### Tanning Room

Sunvision Elite 20 min. bed  
Unlimited Monthly \$35  
10 tans—\$40  
Single tan—\$5

### New Hours:

Tues., Wed. & Fri. 10 am-6 pm  
Thurs. 9 am-4 pm  
Sat. 10 am-2 pm



**Police  
Non-Emergency No.  
(541)966-3651**

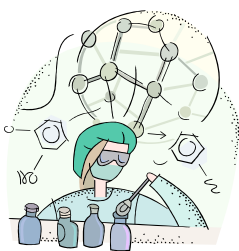


**States.** You may also be connected to a librarian from outside Oregon if L-net is busy. The person you are talking to may not be local, but will still be able to help you.

**What kinds of questions can I ask?** Librarians will try to answer any genuine question you think of. If you are a student and you have a homework question, librarians will try to help you find resources that help, but will not be able to answer your question for you. The type of questions we have referred to L-Net include information on Pest Houses, Oregon History and genealogical research questions.

---

## Gale Cengage Databases



Thanks to the State Library small libraries like Echo have free access to 18 periodicals and general databases through Gale Cengage Databases. As a result Echo Library Patrons can access the following databases:

Academic OneFile	Informa
Business & Company Resource Center	
Computer Database	Discovering Collection
Junior Reference Collection	LegalTrac
Nursing Resource Center	Kids InfoBits
General BusinessFile	General OneFile
Student Resource Center	Opposing Viewpoints
Educator's Reference Complete	
Gale Virtual Reference Library (25 Titles)	
Health & Wellness Resource Center	
Health Reference Center Academic	
InfoTrack Newstand, Junior & Student Editions	
Small Business Resource Center	

InfoTrac contains the following collections: Agriculture, Business Economics & Theory, Culinary Arts, Criminal Justice, Communications & Mass Media, Environmental Studies, Fine Arts & Music, Gardening, Landscaping & Horticulture, Home Improvement, Hospitality, Tourism & Leisure, Nursing & Allied Health, Psychology, Popular Magazines;

If you would like to access these collections you must have a current Library Card and be a patron in good standing. Call or stop by the library and we will provide you with a password. Then go to the Gale Oregon Portal at <http://www.galesupport.com/oregon/> in the first box select Echo Public Library This will open up the list of databases. Select one and

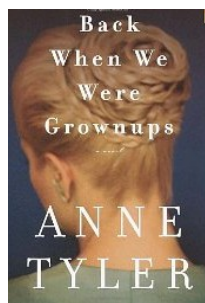
you will be asked for your password. You will have to put in the password every time you navigate between databases.

Gale is a leader in e-research and educational publishing for libraries, schools and businesses. Its reference content as well as full-text magazine and newspaper articles are noted. The company creates and maintains more than 600 databases.

---

## November Book Club

The Echo Book Club is reading Anne Tyler's Back When We Were Grownups. The next gathering will be on Wednesday, Dec. 1st at 7 pm at Jennifer Cox's house at 331 E. Willow. To get a copy of the book call Margaret Anolfo at 541-376-8646 or Jennifer Cox at 376-8559. One copy of the book is available in the library.



Amazon Books Review: The opening line of Tyler's 15th books starts: "*Once upon a time, there was a woman who discovered she had turned into the wrong person.*" Alas, this discovery has less to do with magic than with a late-middle-age crisis... At 53, this perpetually agreeable widow is "wide and soft and dimpled, with two short wings of dry, fair hair flaring almost horizontally from a center part. Given her role as the matriarch of a large family--and the proprietress of a party-and-catering concern, the Open Arms--Rebecca is both personally and professionally inclined toward jollity. But at an engagement bash for one of her multiple stepdaughters, she finds herself questioning everything about her life: "How on earth did I get like this? How? How did I ever become this person who's not really me?" She spends the rest of the novel attempting to answer these questions--and trying to resurrect her older, extinguished self.

---

## Pre-School Story Time

The weekly pre-school story & craft time is Thursday at 10:30 am in the library.

## Donations Library

Anonymous	\$10 children's books
Alisha Alford/Randy Randolph	\$100 for Children's DVDs
Dick Kennedy	Collection of 5 Lincoln Commemorative Pennies
Curtis Bauck	18 books/3 DVDs
Charlotte Berry	113 books
Patricia Cunha	20 books
Jeanne Daly	5 books
Rod Graham	24 books/4 Videos
Calvin Smith	8 books
Judith Webb	7 books

## Christmas



Bill & Karen Douglas have made the first donation toward the Christmas food baskets this year with a \$40 cash donation and 12 boxes of onions.

## Vina Bromell Wilson

Tracie Bromell Surber has written to say that her mother, long time Echo resident Vina Bromell Wilson, has been diagnosed with Cancer and may soon be facing Chemotherapy. Tracie said her mother would appreciate receiving notes from friends at home. You many write to her mother at: Vina M. Wilson, 16234 Vancil Loop SE, Yelm, WA 98597

## Baker-Davis Benefit

Echo graduate Denene (Baker) Davis, daughter of Suzie Davie of Echo, has Stage 4 Inflammatory Breast Cancer which has metastasized to her liver and spine. Family and friends are holding a benefit on November 12 at the Hermiston Community Center on Hwy. 395 at 5 pm to raise funds to help with medical and travel expenses for Denene's treatments. Planned are a bucket raffle, silent auction, and "spin to win wheel". Local groups will provide entertainment. Tickets for the dinner are \$20 per person or \$75 for a family of four or more. Dinner



is a Spaghetti feed with soda, beer and wine.

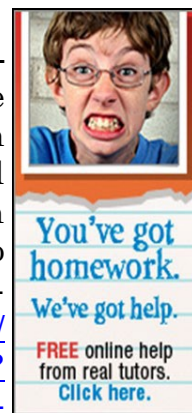
Cash, items for the silent auction or raffle can be donated by contacting Lori Horn at [lori.j.horn@lesschwab](mailto:lori.j.horn@lesschwab) or simply send c/o Les Schwab Tire Center, 830 N. 1st, Hermiston, OR 97838, (541)567-8528. Funds can be deposited directly into an account at any local Columbia State Bank.

## Halloween Party

Thanks to Jeanne & Gene Hampton, Kathie & Lloyd Ferge, Trevor Pyke, Charlotte Berry, Misty White, Anthony Watson, Josh White and other Echo Students/Key Club members who helped with the Halloween Party Sunday night either through donations or their labor or both. There was a great turn out.

## Tutor. Com

A program called **Tutor.com** that provides live online access to tutors to help with homework for all ages is provided free to library patrons through Libraries of Eastern Oregon. To access Tutor.com go to the following webpage: <http://lhh.tutor.com/?ProgramGUID=e36cf357-f12b-4dc4-9753-b8ed0a64a0c1>. Since our library doesn't have barcodes on patron cards yet you will need to enter e7826 as your password.



This site offers live tutor help from 2 to 9 pm daily in math, language arts, writing, social studies & science as well as access to standardized state tests and college prep, entrance exams and other tests. You can select help in elementary, middle school, high school, through college levels. There is even a button for "Proof Point" where a live English teacher will proof a document.

The adult education area provides help with careers, continuing education, helping with children's homework, GED, etc. & the College tab has more advanced subject tutoring such as calculus.