

The Echo

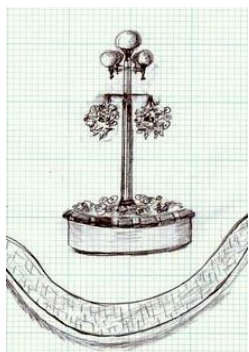


March 2011

Published by the City of Echo

PO Box 9/20 S Bonanza-(541)376-8411

DOWNTOWN GRANTS



Two more grants have been received for the Downtown Project. This project is scheduled for the 2012 construction season. Grants from ODOT's Small City Allotment Program (\$25,000) and Wildhorse Resort Foundation (\$10,000 for vintage street lights) join the \$50,000 grant from the Echo Community Benefit Fund (\$50,000) which was awarded last fall. The grant funds will match a \$500,000 plus ODOT grant.

This project is the outgrowth of a Downtown Study that was completed in 2007. The Downtown Committee decided that widening sidewalks, adding planters, columnar trees, curb extensions at corners and vintage street lights and vintage style sign posts, drinking fountains and other streetscape improvements will help create a downtown where people want to shop and establish businesses. This project would also remove overhead power lines and place them underground.

If enough grant funds and donations can be raised, the project will be expanded to include downtown art and possible entry signs with art. The Echo Public Art Committee will meet again in March. If you are interested in serving on this committee call city hall or email ecpl@centurytel.net.



1. Portland-style replica drinking water fountain; 2. Art in planters downtown Joseph

Red2Red XC Race & More

The 3rd annual Echo Red 2 Red Cross Country Cycle Race will be Saturday, March 12. Last year



there were over 350 entries and as many as 450 may register this year. The race starts on Main Street at 11 am and then goes west out of town on the Echo-Lexington Highway to the Piercy/Echo West Ranch on Snow Road where there is a 20 plus mile cross country single track mountain bike course that is open to the public. More details and registration information can be found at the website: [http://www.echohillstrailbuilders.com/Echo Red 2 Red XC MTB Race/Home.html](http://www.echohillstrailbuilders.com/Echo%20Red%20XC%20MTB%20Race/Home.html)

(cont. pg. 2)

More Race Day Events: Art Show & Clown

The first annual Creative Echoes Art Show & Market will be at the City Hall Auditorium on Saturday, March 12 during the Red to Red Cycle Race from 10:30 am to 4 pm. A copy of the flyer is included in the newsletter. Artwork



will be accepted on Thursday afternoon. Volunteers are needed to help with the registration. If you are interested in helping contact Diane Berry 541-376-8411, ecpl@centurytel.net.

(cont. pg. 2)

(cont. from pg. 1)

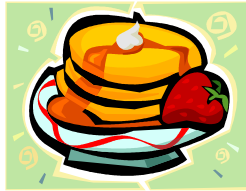
Red2Red Race, Party, Food

Residents can expect road delays from 10 am to 3 pm on Main Street between Bonanza St. and Snow Road.

The winery will be open for tasting and live music Friday evening and on Saturday. Prodigal Son Brew Pub from Pendleton & Sno Road Winery are sponsoring a beer garden with live music in the Koontz Building on Main Street called the **Red2Red-Faced After Party** from 11 am to Midnight. This is open to the public. There will also be food. Red to Red T-shirts are available for \$15 at the winery.



The Kiwanis Club will serve a \$5 Pancake Plate Breakfast from 8 to 10 am and a Baked Potato/Chili Lunch for \$5 (free to racers) from 11 am until the race ends. Proceeds will go to the scholarship fund.



(cont. from pg. 1)

March 12 Clown Show

The Echo Kiwanis is sponsoring Big Top the Clown's performance again this year in the church basement on N. Bonanza from 11 am to 1 pm. Admission is Free, but donations of canned or packaged foods or cash for the Kiwanis' monthly Food Basket Program for Needy families are gladly accepted.



Public Works Projects

Water Study: Anderson Perry & Associates Engineering has been awarded a contract for a study on the city's 31 year old water system. The Comprehensive Study will look at water rights, the water system



deficiencies, capacity and provide new maps. The study is funded by an Oregon Community Development Block Grant from the State of Oregon, Business Oregon Infrastructure Finance Authority (IFA). Greater Eastern Oregon Development Corporations (GEODC) has the contract to administer the project.

Sewer Project: The City just received a letter from IFA that they have awarded the city a \$320,000 Block Grant. This grant funds the next step in the process of bringing the 37 year old wastewater system into compliance with new environmental regulations. The funds will be used for administration, land negotiations, permitting, ground water assessment and design engineering. The city has been trying to find funding for this project for four years while working under a DEQ Mutual Agreement & Order.



After this phase of the project is completed, the City will seek grants and loans of approximately \$2 million to fund construction.

Umatilla County Cultural Coalition Grants

The Umatilla County Cultural Coalition has awarded two grants for Echo projects. A \$1000 grant was provided to the Fort Henrietta Foundation for improvements to the Farm Equipment Display at the north end of town. This will cover the cost of signage & painting & restoration of the equipment.

The second grant for \$200 was awarded to the City of Echo to help with the Creative Echoes Art Show.



Dog Licenses

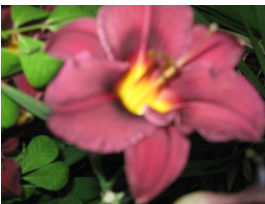
The 2010 dog licenses expired on Dec. 31 and 2011 licenses need to be renewed. Licenses not renewed by Feb. 28, 2011 will be subject to a penalty of \$10 per month, per dog for each month the license is expired beginning with March 1..

Current license fees are \$4.00 per year for a spayed or neutered animal and \$12 per year for an unaltered animal. Proof of a current rabies shot is required.



Communities in Bloom

Let's make Echo not just the best in America this year, but Internationally through Communities in Bloom. Please consider a donation to the Community in Bloom Program for 2011. Donations help fund the judges lodging, floral displays, bark



mulch, cleanup projects, heritage projects and prison crew work days.

You can send your contributions to the City of Echo, PO Box 9, Echo, OR 97826.

Ideas for projects are also needed.



Donation Thanks Library

Patty Cisneros	10 books
Jeanie Hampton	6 books
Elsie Middleton	7 books
Fritz Ramos	23 books
Terry & Nancy Rudolf	20 books
Summers Family	28 VHS

Misc. Donations

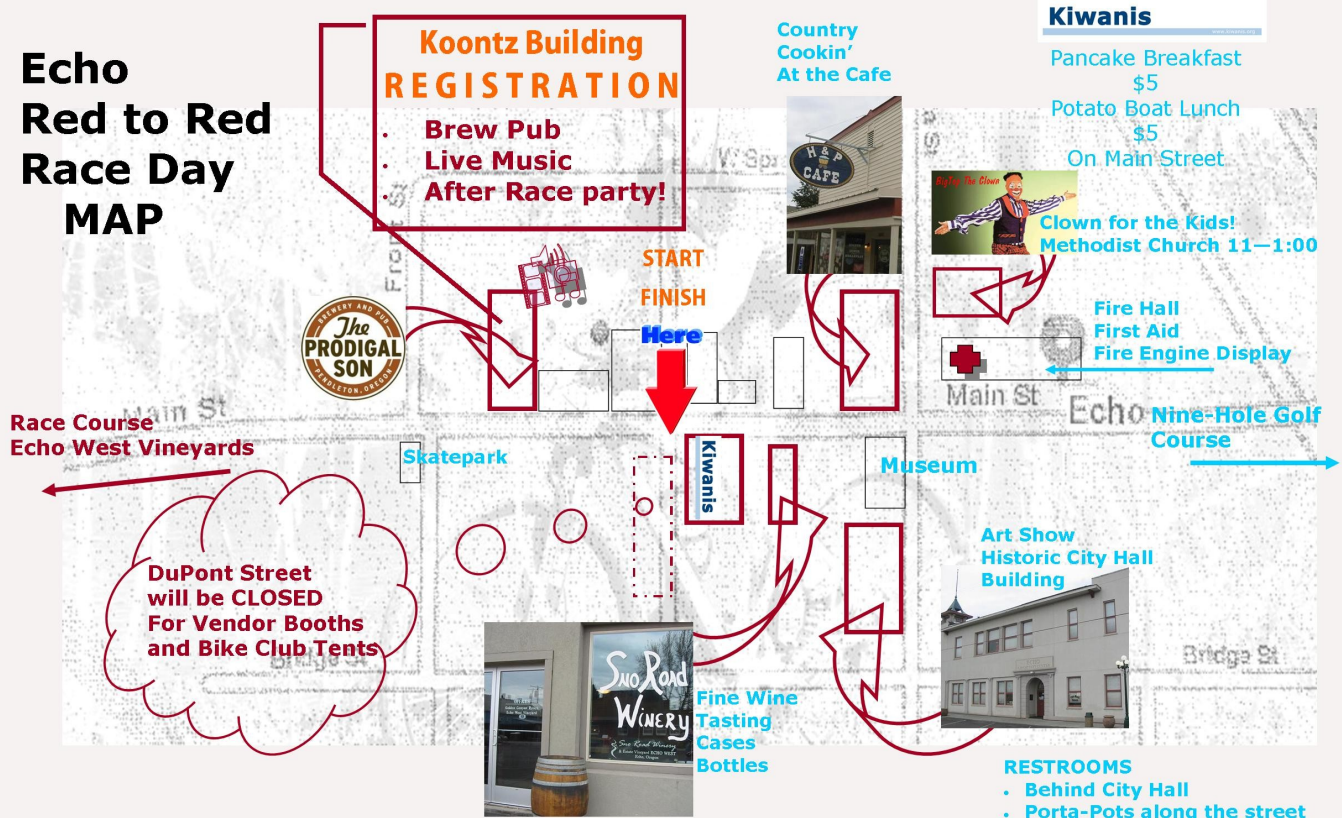
Dale Fife, Misc. Railroad items for China

House, Historic photos of golf course

Mary Curren 11 6-10" pond fish

A big Thanks to Dawn Rudolph for donating time each week as a library volunteer helping to shelve books and more. Thanks!!!.

Echo Red to Red Race Day MAP



Meters

The City will begin reading water meters again this year around March 15. Please remove insulation from meters prior to that date. Thank you.



Tree City USA

In 1989 then Mayor Doug Clement heard about the Tree City USA program operated by the National Arbor Day Foundation. At that time Baker City was the only city in Eastern Oregon that was a Tree City. Clement had heard many visitors, who patronized his business, the Echo Hotel, express surprise at how green Echo and the meadows looked compared to the surrounding desert.

Clement shared his vision of making Echo a Tree City with the city council and the city council has embraced the idea from that point forward. On April 21, at 12:30 pm the City of Echo will celebrate its 23rd Arbor Day and accept awards from the National Arbor Day Foundation for its 22nd year as a Tree City, Oregon's smallest and another Tree Growth Award for efforts beyond the Tree City Program requirements.

The Echo Elementary School will join the community in celebrating with a Tree Fair in the George Park.



The 5th and 6th grade will sing Tree-related songs, there will be door prizes and refreshments. The Arbor Day Proclamation will be signed.

C o m e
help celebrate
this event.

Cleanup Week

It is time to haul off all of the debris that has accumulated over the last year. The annual Sanitary Disposal Spring Cleanup week is April 1 thru 7. During this week, **cash** customers using the Sanitary Disposal Transfer Station will receive up to a \$12.50 discount off of each load. This means loads measuring 2.5 cubic yards with a maximum weight of 454.5 lbs. can be disposed of free of charge.

Garden Websites

Better Homes & Garden <http://www.bhg.com/>

Dave's Garden: <http://davesgarden.com/>

Go to About.Com or Times to see a list of gardening sites: http://gardening.about.com/od/toolschool/tp/Web_Diagnostics.htm or http://property.timesonline.co.uk/tol/life_and_style/property/gardens/article2538034.ece

New Librarian

Wendy Holben has been hired as the new Echo Librarian. Karen Beacham is retiring, but has agreed to work 1/2 day to handle Interlibrary Loans. Wendy will start in mid March.

Notice: Hearing impaired contact may be made through the Oregon Relay Service at: TDD/TTY- 711 or 1-800-735-2900

Proven Winners facebook

page: "A garden can change a city. It starts one yard, one neighborhood, one town at a time. Wouldn't it be great if your town did this? <http://youtu.be/TGB3wU-QBMA>. Check this out and be inspired!!





CREATIVE ECHOES
2011 ART SHOW
Echo, Oregon
Saturday, March 12,



Show Open, 10 am to 4 pm March 12, 2011

Registration: Entries accepted Mar. 10 3:30 to 7 pm

The 1st annual Creative Echoes art show will be in Echo, Oregon in conjunction with the 3rd Annual Echo Red2Red, Oregon Mountain Bike Series Race.

Where: City Hall/Auditorium, 20 S. Bonanza
The Auditorium is located in the National Register City Hall which was renovated in 2000.

What: Open Class Juried Art Show

Cash Prizes: 1st, 2nd, Honorable Mention & 1 People's Choice

Categories: 2 Dimensional
3 Dimensional

In Bloom (Echo participates in the National America in Bloom Program so a special award will be presented for floral or garden themed art entries.

A limited number of easels are available, so please bring easels. Tables will be available. Art must be framed and matted. Artists are welcome to sit with their displays and sell from the show or leave business cards with artwork. Demonstrations are also welcome



Farm Equipment Display

Early farm equipment was often pulled by horses, but as tractors became available, equipment tongues were altered to allow tractors to pull the equipment. You may see altered tongues on equipment displayed here.



Manure Spreader

The manure spreader marked IHC for International Harvester Company, c. 1932. Original colors: Red axles, beaters, gears. Wheels: cream and blue. IHC was formed in 1902 by J.P. Morgan. He purchased the McCormick Harvesting Machine Company and Deering Harvester Company, along with three smaller agricultural equipment firms: Milwaukee; Plano; and Warder, Bushnell, and Glessner which he combined to form the new company.

Fresno Scrapers

The Fresno was used to move earth and was pulled behind horses or mules to level land for farming or to make irrigation canals. The name is for Fresno California. Originally a Buck Scraper was used to dig ditches. James Porteous, a Fresno wagon shop owner, improved the buck scraper design in the early 1880s. About 1885 Fresno Blacksmith, Abijah McCall invented "a scoop-style rollover scraper made from iron. McCall had experience as an earthmover on irrigation ditches," which he used to improve the design. McCall later sold his patent to Porteous who continued to manufacture the equipment. While still called Fresnos the two earth moving and leveling pieces here are later adaptations with wheels. An early Buck scraper is on display at the China House.

Hay Stacker

This is a locally manufactured bale lift/hay stacker, note the vintage car bumpers.

Iron Age Potato Planter

Fred Bateman, who owned the Iron Age Co. at Grenloch, N.J., developed the Iron Age planter. The pickers deposited the seed pieces into holes in a revolving 'lazy-susan'-type plate before dropping them in the tube. As the plate revolved, a person riding on the planter filled any empty holes by hand, thus eliminating missed hills. A furrow is made by a furrow opener and trailing double disks (or shoes) close the soil over the potato pieces. The wooden, rather than metal hopper, shows this is an early, pre-1920 Iron Age Planter.

Potato Digger

Potato diggers were produced between 1920 and 1955. Later models came primarily in two-row models and with pneumatic tires. This digger does not have pneumatic tires and is a one-row model c. 1920-1935. Many manufacturers built these and without a manufacturers mark or number it is hard to identify who made this digger.

Lister-Planter

This is a John Deere Lister, a type of early horse drawn planter and seeder that would have had a person walking behind it to help guide it c. 1920.

Hay or Dump Rake

The number on this Hay rake indicate it is a McCormick Self-Dump Rake c. 1903-1912. It would have been used to gather grass or alfalfa crops after they were cut. The machine gathered the grass or hay as two horses pulled it across the field. When the tines were full, the farmer raised the and dumped the hay. A skilled farmer could dump the piles in rows.

Eversman Automatic Land Leveler/Pat. Pending 1469502

This piece of equipment was made in Denver, Colorado. L.W. Eversman filed a patent for the 9 foot Automatic Land Leveler in May 1931. One of these is listed on the archaeological survey of the McGee Ranch Vicinity at Hanford Reserve near Richland, WA.

Fahr Original Sickle Mower

Fahr was a German Company , but the mower may have been imported by International Harvester as they were involved in negotiations to acquire the company for several decades. The company is now called Deutz-Fahr. This type of horse drawn sickle bar mower was made between the 1880s and 1920 and was used for cutting hay and grass. After 1930 this type of mower was abandoned and replaced with tractor drawn ones.