

The Echo



June 2013

Published by the City of Echo

PO Box 9/20 S Bonanza-(541)376-8411

Downtown Dedication/AIB Judges Reception

Judges Alex Pearl and Dwight Lund will begin their tour of Echo on Thursday June 13. Everyone is invited to a reception to meet the AIB judges and to dedicate the Downtown Improvement Project at 1:30 pm. The dedication will be on Main Street and refreshments will be served in the new picnic shelter. This is your opportunity to meet the judges and tell them what is great about our community.



Echo PTA Fundraising

The Echo PTA is now collecting the following products as a fundraisers for the

school: Capri Sun and Honest Kids Pouches, Solo Squared Cubs #6 Rigid; All Box Tops, Campbell Soup Labels. You can send these to school with your child, or just drop them by the office.



Echo Blooming

Our heartfelt thanks again this year to Tania & Sherrie at Kopacz Nursery for providing the green house space, plant stock and labor for our beautiful hanging baskets, mall planters & hay racks and other plants. With the addition of the 15 new street light hanging baskets, the contribution is even greater.

The flowers arrived from the greenhouse just in time for those attending the ACE Car Show to appreciate.



ACE Car Club/CROC

The 8th ACE Car Club was a major success, attracting nearly 100 more cars than last years 50 and hundreds of visitors. The Century Ride of the Century cyclists mingled with the car enthusiasts and ate





lunch in the park.

The Echo Museum was open for their 2nd free Family Day and

raf-fled a quilt donated by Stephanie Ray. Lloyd Piercy was the winner of the quilt drawing.



AIB Donations

Thanks so much for the donations to America in Bloom this year. So far donations total nearly \$3300 this year. AIB donations help with purchase of plants, projects like downtown art, beautification contest prizes, rock gardens, judges lodging, etc. May donations are listed below:

Umatilla County Small Cities Grant	\$1,000
Umatilla County AIB Grant	\$500
RDO/John Deere	\$200
Power Pro Electric	\$150
Amstad Farms	\$100
Jim Purswell Pumps	\$100
Penny Spike Shepherd	\$100
Bob & Maria Tolar	\$100
Ray & Bennie Tolar Memorial	\$100
Anderson Perry & Associates	\$75
Charlotte Berry	\$50
Eagle Ranch	\$50
Echo Fire Board	\$50
Echo Secure Storage	\$50
Fort Storage	\$50
Fort Henrietta Foudation	\$50
His Design Thrift & Gift Shop	\$50
Doris Pitzer	\$50
Pat & Judy Wood	\$30
American Printing	\$25
Estie Billing	\$25
American Printig	\$25
Echo Boosters	\$50
Janie Enright	\$25
Frank & Bev Harkenrider	\$25
George Murdock	\$25
Bill & Judy Webb	\$25
Don & Patricia Barrett, Tourists from County	
Cork Ireland	\$20

Community Visioning

The Multi-Vision Integration follow up presentation of the artist concepts has been changed from June 6 to Friday, June 7 from 1 to 3 pm at city hall. Everyone is invited to attend and see the concepts developed from the first workshop.



Jim Waddell, project facilitator, says the drawings collectively represent the visions of people who “provided their respective visions of living/working sustainability in Echo. Using the MVI process participants drew and shared their personal visions, then connected them with those of fellow participants as well as visioning art from previous workshops.” Collectively these drawings are a



“community of visions” instead of a community vision of what the scene would be in the town center, the railroad properties or the area surrounding the Umatilla River.

tilla River.

The MVI process is funded by EPA’s Brownfield’s Program. What they are is 1) “a Best attempt to capture many of the visions of partici-

Kopacz Nursery & Florist



“Helping Make Echo More Beautiful”

Kopacz Nursery sponsors Echo’s Beautification Program each year; Providing plants, labor & green house space for floral displays & donates annuals for public areas.

- Beautiful Bouquets
- Gift Center
- Blooming & Houseplants
- Visit us on Facebook

541-567-3278

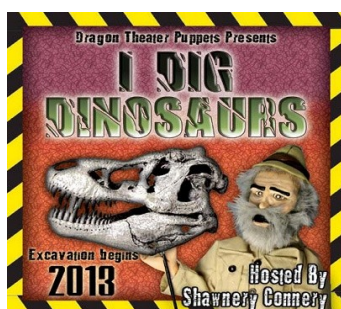
465 W. Theater Ln. Hermiston



pants in the workshop. They convey an impression and lifestyle derived more from an authentic, organic evolution than a plan or design. The illustrations integrate the visions of many participants who envisioned Echo as a livable community that also welcomes and draws vision to Echo.



Summer Reading



The annual summer reading program with the theme “Digging into Reading” will begin June 17 and end with a party on Aug. 2. Some of the subthemes are: archaeology, gardening, ship-

wrecks and mining.

The Summer reading program is open to children birth to 15 years of age. Come in and sign your children up between June 17 and 22 and they will receive a free book and a chance to win an Oregon College Savings Plan savings account.

A large selection of books and materials have been added to the collection that are related to this theme.

Among the programs scheduled so far are:

- ♦ June 21st—2 pm—**Dirt on Dirt** Storytime/ Craft. Children will plant grass seed and watch it grow over the next few weeks.
- ♦ June 28th—2 pm—Archaeologist Sarah Silbernagel, **Digging in the Dirt**. Children will have a hands on opportunity to see artifacts excavated from the dirt in the area from sites like the Fort Henrietta/ Uilla Indian Agency site.
- ♦ July 5—2 pm—**Digging up Dinosaurs**, paleontology..
- ♦ July 12—2 pm—**Burrowers**. Learn about those critters that dig in the dirt.
- ♦ July 19—2 pm—**Digging up Trouble**.
- ♦ July 22 —1 pm—Professional Puppeteer

Jason Ropp of Dragon Puppet Theater,

- ♦ July 26—2 pm—Under the Sea.
- ♦ Aug. 2—2 pm—Party/Awards.

The Pendleton Art Center Art Project will be among the special programs this year. The art program(s) will be in July or August.

Did you know most children lose skills over the summer? Participation in a Reading Program such as the FREE summer reading program at the library can prevent the loss of skills.

Library News

The library automation process has begun. Youth and Young Adult books are already sporting their new bar codes for ease of check out and return and soon patrons will receive new library cards with bar codes that can be used at any library in the system.



May Donations

Thanks to our loyal patrons for your donations to the library.

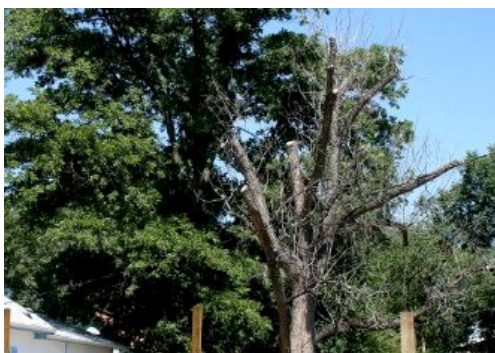
Jeannie Daly	5 books
Kent & Lori Madison	5 boxes vintage books
Elsie Middleton	3 books
Carol Packard	1 box books
Spike Family	2 totes antique books
Judy Webb	6 books

TREE CORNER

Thousand Canker Disease

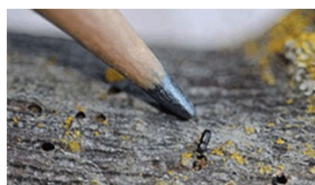
Black Walnut Trees across the west are being devastated by a disease called Thousand Cankers. It was originally found in Colorado where it was killing trees ten years ago. The disease wasn't recognized however until 2008. It is caused by a fungus, *Geosmithia morbid*, that is carried into the tree by the walnut twig beetle. Other Walnut species are also being impacted by the disease.

The symptoms: the fungus attacks a localized area in the phloem just under the bark after it is carried to the tree by the beetle. This causes nutrient disruption to foliage which leads to branch dieback. We are seeing



this in Echo with a number of beautiful old 100 year plus walnuts showing severe dieback in the upper crown. The

cankers rarely show external signs typical of other canker diseases, but they may show minor weeping at the points where the beetle enters the bark. Early symptoms include yellowing of leaves and thinning of the upper crown of the tree. As the disease progresses, the large limbs begin to die and they may have dead leaves. The trees have usually been infected for several years before this happens and often only live a few years longer. To date no treatment has been found that can save the tree or control the beetle have been found.



We have consulted with several Arborists and Dept of Agriculture sites about this disease, and they concur, topping the tree is not a treatment for the disease. When you cut down an infected Black Walnut DO NOT TRANSPORT OR RE-USE THE WOOD. Transporting black walnut logs is the probably cause of the spread of the disease through out the west.

If the disease is not established in the tree injections of insecticides and fungicides my help, but have not been effective on trees that are showing dieback. If the disease makes it into hardwood forests in the east it could have a devastating impact.

Cemetery Tree Donation: The city's urban forestry program donated five 6 foot plus trees to the Cemetery to replace dead and dying trees.

Name That Tree: We are still waiting for suggestions for a name for the Fort Henrietta Park Red Horse chestnut in honor of 25 years in the Tree City USA Program. A num-

ber of large and unique trees have names:

a. California Bristle Cone Pine, 4,700 years old, name: **Methuselah..**

b. **General Sherman**, a Giant Sequoia, California, world's most massive living thing.

Community Cleanup

Please make the extra effort over the next two weeks to pull those weeds, mow the grass along the road and in your yard, and generally pickup around your yard or even help a neighbor if they need it to show your community pride in anticipation of the America in Bloom Judges visit June 13 and 14.

Judges not only look at public improvements, but at residential and commercial floral displays, tidiness, community involvement, landscaping, heritage preservation and environmental effort.

We also want to thank the Echo School District Staff and Students for their continuing efforts to show community pride on their annual May Cleanup.

Thanks also to the Echo Kiwanis for their continuing efforts to cleanup and improve the community. The Kiwanis also organize and man the monthly Food Pantry.

Discarded Vehicles

How long has that car been setting in front of your house—4 years? 10 years? Maybe it is time to sell it to someone who can actually restore it. Or time get a little money from the scrap and help cleanup town while you are at it.



Compost Bins

Five Compost Bins should be arriving soon. The cost will be \$35. The people on the current waiting list will have the first chance at the bins. If these work out, we will order more this fall. They are a Bosmere K767 11 cu. Foot compost bin.

