

# The Echo

Oct. 2013

Published by the City of Echo

PO Box 9/20 S Bonanza-(541)376-8411



## Echo Wins!!!

We are proud to announce that Echo won the America in Bloom Award for Small Cities (this year under 4000 population) for 2013 and as a three time winner we are winning a Circle of Champions award.

This is an award that most of

the community can take pride in. All who have volunteered for community events, helped with Historic Preservation projects or made the effort to cleanup your yard, your neighborhood or helped with town Cleanups, can pat yourselves on the back. Our special recognition was in the area of Overall Impression. <http://www.americainbloom.org/Awards-Program/Participants---Current-and-Past.aspx>.

Since our competition included award winning communities of 1900 to nearly 3700 population, it's great that we can win with our more limited population and resources.



Thanks to all of our donors who make entry into the contest and beautification projects possible.

We hope you are as proud of this award as we are and will help us not only win again next year, but win one of the category awards. The category awards are not divided into population categories everyone competes from largest to smallest. These awards include Floral Displays, Community Involvement, Historic Preservation, Urban (cont. pg 2)

## ACE Car Care Seminar

Echo School's A.C.E. Car Club is hosting a free car care seminar on October 22 from 6:30 to 8 pm in the school commons. Joe Horst, ACE master Tech & owner of La-Grande Auto Repair will present the seminar. Horst says that he can save owners \$100 to \$1000 per year with his tips in both fuel economy and auto efficiency.



There will be refreshments and door prizes.

## Halloween Party

The Annual City Halloween Party will be at city hall Thursday, Oct. 31 from 5:30 to 6:30 pm. The party will include a costume contest, hot dogs, punch, children's games & prizes.

Volunteers are needed to help with games & serving please contact city hall @ 541 -376-8411 if you can help.



## Koontz Building

The renovation of the Koontz Building is nearing completion. This project not only preserves an important historical building but makes it into a functional beautiful addition to the downtown. It will soon be open for wine tasting and events such as weddings and receptions. The renovation has been (cont. pg 2)



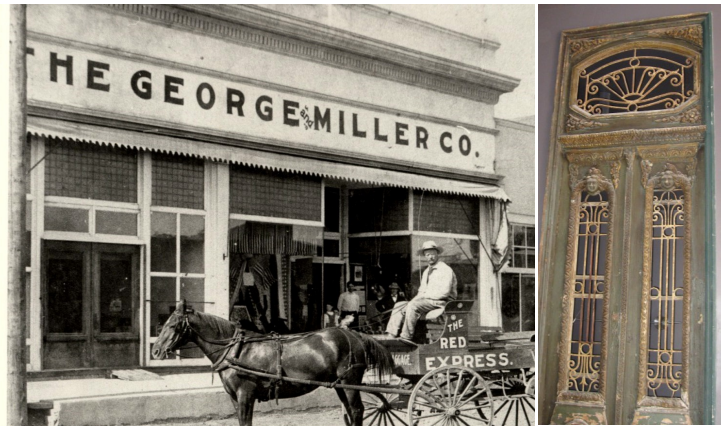




**(cont. from pg 1) America in Bloom:**

Forestry, Landscaped areas, Environmental Effort, Overall Impression. The Urban Forestry Award is

sponsored by JR Schmidt Family Charitable Foundation of Boring, Oregon. There are also special awards that are sponsored by various businesses: Best Commercial Streetscape, Most Effective Use of Bold Foliage, Most Creative Design Using Bulbs, Most Sustainable Park System, Best Hanging Basket/ Container Program, Best Arbor Day Celebration, Most Effective Water Management Program, Most Dynamic Community Garden, Best Volunteer Restoration Program, Best Historic Restoration Project. America in Bloom Spirit Award.



valued again at \$5000. Renovation includes addition of public art and architectural elements such as cast iron decorative panels, Egyptian Gates, Vintage lighting, antique iron gates and antique doors. The original freight elevator has been preserved as well as the border of the original pressed tin ceiling. The Piercy's are adding a courtyard and fireplace outside for evening events.

**(cont. from pg 1) Koontz Building** done by local craftsmen who



have restored and enhanced the original store front. Rare antique leaded glass has been restored above the front windows.

The building was constructed in 1904 and is on the National Register of Historic places. Originally it was JH Koontz, town founder's store. The western third of the building was the hardware, feed and seed area while the eastern section was grocery, clothing, furniture and housewares.

At the time of construction it was the highest valued commercial building in town at \$5000, but by the time US Bank deeded it to the city in the mid 1990s, it was the lowest



**Kopacz Nursery & Florist**



**"Helping Make Echo More Beautiful"**

Kopacz Nursery sponsors Echo's Beautification Program each year; Providing plants, labor & green house space for floral displays & donates annuals for public areas.

- Beautiful Bouquets
- Gift Center
- Blooming & Houseplants
- Visit us on Facebook

541-567-3278  
465 W. Theater Ln. Hermiston



## Reading Meters

The final meter reading for this season will be this month. Water meters can be insulated after October 30. Please only use a small grocery size sack of leaves or insulation in the meter box.



## Heritage Star

Kuri Gill, program coordinator for the Historic Cemeteries and Heritage All-Star Communities Program, met with the council and members of the Echo Museum Board to discuss Echo's application for the All Star Program last month. We currently meet 11 of the 15 criteria for the All Star Program. Fifteen of a possible 20 are required. A list of priorities Echo is close to retaining is listed below.

**Preservation Program** – Get the museum board to meet as the heritage commission and start developing language for a Heritage Code. Gill recommended that the city become a Certified Local Government which would make the town eligible for non-competitive grant dollars for preservation projects. **Long-Term Local Business** – The businesses must have been in business for 50 years or more under same ownership (same family). To use farms we must show a direct connection to the city. We have proposed three businesses: Echo Hills Golf Course, Spike/Teel Ranch & Cunha (Snow Ranch). *“These are a bit of a stretch because one is owned by the city and the others are outside of the city. Compelling arguments were made as to the clear relationship of the ranches’ business to the city,”* Gill said. This program must include a recognition program for long-term businesses, *“this could be completed by the city, museum, newspaper, etc.”*

**Public or History Record Archive** – the museum and library both have collections that can be available to the public. Getting a collections policy approved and implemented will achieve this criteria. **Photo Archive** – Same



as above.

**Potential Future Criteria: Heritage Coalition** – *“It seems that Echo is doing this organically, to attain this, you would just need to formalize it. This group would only need to meet once a year. They would need to discuss collaboration and coordination of effort. This would need to be in place five years before it counts, but it could be a simple one to do,”*

Gill wrote.

**School Programs** – A few potential projects were discussed in the meeting. One was a first grade project. This could be eligible and should be tracked so it can be included when it is in place.

**Oregon Main Street Program** – This is a downtown revitalization program based in preservation and heritage. The state program facilitates the work of local communities. This would be a long term goal, but might be worth trying since there is not a current, active organization.

Anyone interested in getting involved can contact Diane Berry, City Hall, 541-376-8411 or email [ecpl@centurytel.net](mailto:ecpl@centurytel.net).

The Echo Museum has scanned and is in the process of organizing copies of historic photographs for the photo archive mentioned above. We still are looking for photos, if you have any, please consider emailing us copies or bringing the photos by so we can scan them.



*Flour Mill.*



*Wm Wattenburger & Family*

## Portuguese Heritage

One of the many unique parts of Echo's rich history is the settlement by Portuguese immigrants from the Azores. In fact even today, the Census lists Echo as having the 11th highest number of people who have Portu-





gueuse ancestry in the state.

It is important that information on the Portuguese be captured as soon as possible. The first generation and many of the

second generation are now gone. We need to gather this information before it is too late.

Besides building a collection of materials about the Portuguese, we would also like to use the information to inspire an artist to create a piece of public art for the downtown that would commemorate this part of our heritage.

In the interim, while we wait for grant funding to help with the project we are asking for help in gathering names and mailing or email addresses for Portuguese families who have Echo roots.

We also are interested in photographs, biographies and stories passed down through the generations. Please send the information to Diane Berry at 541-376-8411 or ecpl@centurytel.net.

## Family History Important

The Umatilla County Historical Soc. Newsletter included interesting information from the June 2013 issue of *Parents Magazine*. : "When a team of psychologists measured children's resilience, they found that kids who were best able to handle stress." knew the most about their family's history had. "the stronger their sense of control over their lives and the higher their self-esteem. The reason: These

children have a strong sense of "intergenerational self" — they understand that they belong to something bigger than themselves, and that families naturally experience both highs and lows'.



Take advantage of the library's Free Ancestry.com and Heritage Quest opportunities to tell your children about their family history. You can access Heritage Quest from the Echo Library website <http://echo-oregon.com/library.html>. Then click on the Heritage Quest link on the right in the box with the other databases and library catalog. You will have to if you have a library card with a barcode as you will need to put the barcode number in to gain access to this and other databases.

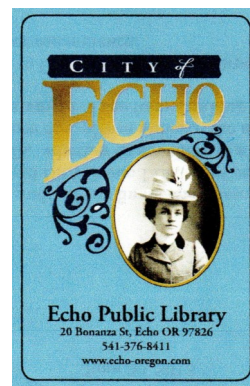
## Cat Neutering/Spaying

The PAWS Animal Shelter in Pendleton is offering an Affordable Cat spaying and neutering clinic on October 8th at 8 am at the Stanfield Food Basket location. Please call PAWS at 541-276-0181 for more information.



If you need someone to transport your cat to the clinic, a volunteer has offered free transportation to the clinic, **if** you pre-pay and contact Echo City Hall to leave your name and phone number, 541-376-8411.

## Library



Nearly 120 patrons have registered for the new library cards with bar codes as of the end of September. To get a new card, come to the library with your ID card or Driver's license & we will fill out the form to activate your card and issue a new one. If you are already a patron and your personal information is up to date, you can call us and arrange for the card over the phone. New residents must either provide ID with your physical address or a piece of mail, rental agreement, or some other item to confirm the Echo address. If you don't reside in Echo, you

will need to present a card from another library in the Sage system to check out materials. If you live in Echo and have a card from another Umatilla County Library District Library, you will need to obtain an Echo card. Your other cards will be voided. The system will generate automatic overdue notices and reminders to your cell phone or email.

### Halloween

Halloween is just round the corner and the library has a lot of fun materials for decorating, baking, making costumes and other fun Halloween celebration materials. There is even a book on using Duck tape to make costumes.

Don't forget the Halloween movies. The Library has a large selection of Halloween and scary or horror movies. Halloween books are on display on new book spinners.

### Holidays

Its time for all of you DIY people to start planning for the holidays, making your gifts etc. The library has a large selection of books to help with baking, gift making and decorating. Remember all of the library materials are not listed on the online catalog yet, so don't forget to ask for help finding Holiday or any other materials.

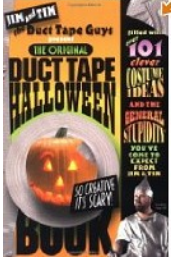
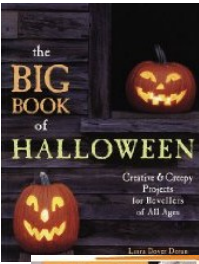
### Story/Craft Time



Craft and storytime is every Friday at 2 pm. In the photo Librarian Laurie Nelson and youth show friendship bracelets created in last Friday's craft time.

### Donations

Anonymous	\$10
Anna Marie Buck	10 books
Patty Cisneros	11 Audio books
Gina Cole	3 DVDs & 1 CD
Jeanne Daly	3 periodicals
Karl Jensen	1 DVD
Lou Nakapalau	5 books



MaryAnn Power	1 book
Gloria Rodriquez	8 boxes of books
Janice Schulze	3 books
Gayle Weatherson	36 books

Thanks to Colleen Williams who has donated over 40 hours of labor to help with automation.

### New Park Playground

The new park playground structure arrived Oct.2 and should be installed in November.

### Pastrami Travels the World

New York Photographer and Art Dealer Monroe Warshaw stopped by Echo yesterday to take some photos. Warshaw trav-



els with is 8 year old golden retriever Pastrami around the country and even overseas and takes photos of Pastrami in interesting props in

front of historic and famous spots. He emailed us back a few photos of Pastrami travelling around Echo. These feature the museum, entry sign and China House. You can see more of his photos by just typing his name into Google.

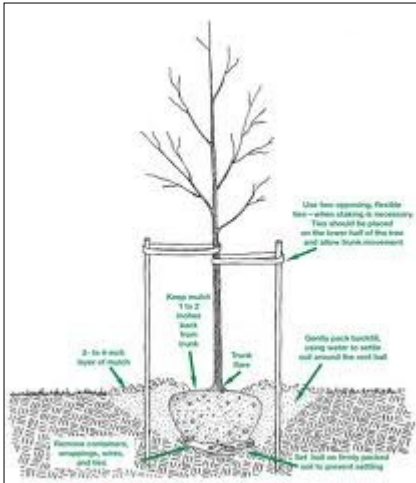


### AIB Judges Sheet

Part 1	Floral Displays: maximum	actual
Municipal	75	60
Business	30	22
Residential	30	22
Community Involvement	40	32
Judges commended Colleen Williams and Tammy Davis for the "stupendous" job on golf course flower beds. Development of a xeriscape trial garden was suggested.		



# Tree Corner: How to Kill a Tree



Tree City USA  
Bulletin #14,  
James R. Fazio,  
Editor

"No the editor has not gone mad, nor has the National Arbor Day Foundation reversed its role of promoting good tree care! Instead, we hope we have

gained your attention with the bit of reverse psychology in the title and throughout this issue. The urgency to spotlight needless destruction of trees has reached a critical level. Most of the destruction is preventable-if people only realized the effects of their actions."

A study by Michigan State Univ. found that nearly as many trees are removed as are planted (.9 to 1 respectively). In cities more are removed 4 to planted 1."In short we are losing ground...There are two major to attack the problem. One is to plant more trees. ..The other is to prolong the lives of trees we already have...

## Planting:

### To Kill a Tree:

- ♦ Leave a tree out where the wind & sun will dry out the roots.
- ♦ Do not water the tree after planting.
- ♦ Plant the tree in a saucer-like depression & a narrow hole deeper than the original ground line it had in the nursery.
- ♦ Pack the soil tightly around the roots.

### To save a Tree:

- ♦ Prepare the site by digging a hole a foot deep and 5 times the root ball diameter.
- ♦ Gently remove wires, cord, or plastic from the rootball. Loose pot-bound roots and cut any the circle the ball.
- ♦ Place planting ball in the hole o top of firm soil.
- ♦ Plant at depth of original ground line.
- ♦ Water the soil to settle I instead of packing.

- ♦ Water an area beyond the root ball to encourage the roots to spread.
- ♦ Stake loosely only if necessary, but no longer than one year.

### When Trees are Young

#### To Kill a Tree:

- ♦ Let trees & surrounding soil dry out.
- ♦ Stake the tree tightly, have wires util the tree grows over them or let vines grow on the tree so that the tree may be strangled or its leaves deprived of light.
- ♦ Overfertilize your tree.
- ♦ This often over-stimulates crown growth, making it harder for the tree to survive drought.
- ♦ Keep the soil around the tree compacted to restrict passage of oxygen and water to the roots.
- ♦ Bang a lawnmower into the bark or cut it with a weedeater.
- ♦ Let cars park close to the tree so bumpers can damage the bark. Keep bikes away and don't tie doges to the tree.
- ♦ Overprune your tree.

#### To Save a Tree:

- ♦ In dry spells, water the entire area within & a little beyond the dripline. Water about once a week, enough to have the soil damp to a depth of 1 to 3 feet.



- ♦ If tree is staked, allow room for normal sway in the wind. This aids root development. Cover wire with rubber or plastic to protect bark (Threading wire through sections of old hoses works)

- ♦ Keep soil pores open with mulching or by landscaping with flower an shrubs—no grass.

#### To Kill a Tree at any Age:

- ♦ Pave the area above the tree roots or cut them when making grade changes
- ♦ Top, chop or mutilate your tree.
- ♦ Hire a fly-by-night or tree butcher to "prune" your tree.
- ♦ Use chemicals to kill weeds above the root zone. Avoid using salt on walks where it can run off to the root zone.
- ♦ Trench through the root zone