

December 2018

Published by the City of Echo

P.O. Box 9, Echo, OR 97826/541-376-8411



Veteran's Day Parade

Echo School Students proudly marched down Echo Streets on November 8th to honor US Veteran's.

Scoop the Poop

Please scoop up your dog's droppings. We have received complaints about people either walking their dogs and not picking up the dog poop or letting dogs run at large that are leaving droppings behind. This is especially a problem lately along Main Street. Failure to pickup your dogs droppings is a violations of city codes as is allowing your dog to run at large. which can result in a citation being issued for municipal court. Please be considerate and don't leave this mess behind.



Giving Tree

Names are on the Giving Tree in the City Hall Entry, if you would like to help brighten Christmas for a needy child in the community, you can pick out a tag and purchase a gift for the child and return the

unwrapped gift to city hall by **December 17 at noon.** The tags have the sex and age of the child, and sometimes sizes.

Choose your tag and then show the city clerk so she can note that it was selected and by whom. Delivery will be on the morning of Dec. 19.



If you know of an Echo child in need, you can contact city hall at 541-376-8411 and provide us with information so we can add the child/children to the tree. Cash donations toward Christmas can be dropped at city hall or mailed to PO Box 9, Echo, OR 97826. The Echo Teachers are also gathering gifts for children.

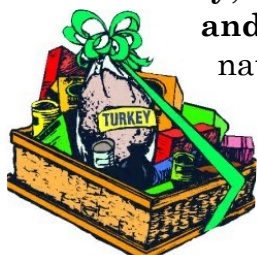
Christmas Concert

The 19th annual Inland Northwest Musician' Christmas Concert at Echo City Hall Community Center is Saturday December 8 at 4 pm. The Carols of Christmas is the theme with the "Bells of Christmas", Polar Express, Grinch & "Fantasia on We Three Kings". The Concert is free, but seating is limited so call 541-289-4696 for reservations. Donations are welcomed.

Christmas Food Baskets

The Echo Kiwanis will be handling the annual Christmas Food Basket Program this year. City Hall will remain a drop site for food for the food baskets for needy families, but will not be delivering the baskets or gathering names.

If you need food, you will need to pick up your basket at the Echo Masonic Lodge on **Wednesday, December 19th between 4 and 5 pm.** Those making cash donations (or check) should let the city clerk know if the donation is for the Giving Tree/Children, Food Baskets or other programs for the needy.



Christmas Donations

Charlotte Berry	\$25
Diane Berry	\$100
Ryan Morris	\$10
Pacific Power & Light (to Echo Boosters)	

For Christmas and other projects for children and needy families \$500

Library Donations

Linda & Jim Ball	60 Books
Bonnie Berry	3 books
Charlotte Berry	43 books
Jeanie Hampton	2 books
Brenda Hunter	35 books

Lorrane Fairbanks c. 1890s vintage dress for Vintage Clothing Collection

ECHO PUBLIC ART

In Memory of Kaye McAtee	\$75
In Memory of Joyce Mackay	\$25

Echo Beautification Program

George Murdock \$100
George received more voter support from Echo residents (66.4%) than any other area of the county in the November election and asked us to extend his appreciation. George has been donation to our beautification programs for the last few years.

Dolly Parton Imagination Library November Donations:

Frankie Sewell	\$25
Charlotte Berry	\$25



Donations to this program can be dropped off at City Hall. For Every \$25 donated to the Imagination Library a child will receive 12 books per year for them to keep. The Echo and Stanfield Libraries are hosting Christmas Bingo nights to raise funds for our Dolly Parton Imagination Library Program. Details are on page 4.



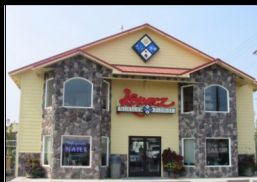
Helping those in need.

**LAST WEDNESDAY
OF EVERY MONTH**

Except Thanksgiving & Christmas
at the Echo Masonic Lodge 4:00pm - 5:00pm

Distribution is early this month for Christmas, December 19th, 4 to 5 p.m.

Kopacz Nursery & Florist



"Making Echo known for its flowers"

Kopacz Nursery sponsors Echo's Beautification Program Providing plants, labor & green house space for floral displays & donates annuals for public areas. 4.

Kopacz: Where Flowers Are Our Business.

Check out our new web page. <http://kopacznurseryflorist.com/>

- Beautiful Bouquets
 - Arrangements & more
 - Gift Center
 - Blooming & House plants Visit us on Facebook
- 541-567-3278



465 W. Theater Ln.

Holiday Bazaar

Echo Community Church, Dec. 8, 9 am to 2 pm. Craft & other Vendors, Soup & Salad Lunch starting at 11 am.



Proceeds benefit the VFW/Church Scholarship Fund.



Dear Santa



Letters to Santa

The North Pole has arranged for the Library to have a drop box for letters to Santa. Santa will make sure any letter dropped off there will be answered if received **by December 19 and if the mailing address and full name of the child** is provided. We actually have a Santa mail box in the library, but you can also drop letters through the slot on the front door after hours.

There is also a letter form that children can use available in the library.

Piano Teachers?

We have had a resident ask for information on any piano teacher in or near Echo. If you are interested or know of a piano teacher, please let us know at city hall.



Christmas Lights

New homeowner or new business owners in Echo are encouraged to join our annual tradition of lighting up the town with Christmas lights. A Free strand of lights is provided each new owner. In addition the first 10 households who come to city hall and ask for a strand of lights will be presented a free strand.



Winter Tree Care

Although trees are dormant during winter, they're not protected from the elements like a hibernating animal that holes up in a snug spot. Trees experience the raw intensity of the cold season. Wintry conditions can be stressful on trees, especially newly-planted or young trees that lack mature defense mechanisms such as a wide, spreading root system or thick bark. Learn how to protect trees and help them survive the winter season and thrive in years to come.

Mulch

In late fall to early winter, add a thin layer (no more than 2 inches) of organic mulch beneath your tree's drip line. Mulch insulates soil and tree roots against temperature extremes and slows water loss from soil. Don't pile mulch directly against the tree trunk. Wait to mulch until the ground freezes to prevent mice from making your mulch their winter quarters.

Water

Keep trees, especially newly-planted ones, well-watered through fall – until the ground freezes. Before freezing temperatures, remove irrigation bags surrounding the tree trunk. If a warm spell thaws trees and soil, water newly-planted trees, especially if your region is in the midst of a prolonged drought.

Spray

Winter sun and wind create drying conditions for broadleaf evergreens, such as Pieris, Rhododendron or Mountain Laurel. Spray an anti-desiccant, which covers leaves with a waxy coating, to reduce moisture loss.

rabbit guard. Sunscald occurs most often on trees planted on west or south sides of buildings.

Protect

Rabbits and voles love to gnaw the bark on young trees. Typically they'll consume outer and inner bark, exposing inner wood. If chewing damage occurs halfway around the trunk, the tree likely won't survive. Block rodents by wrapping trunks with plastic tree guards, starting at the bottom and take care not to burn the plant.

HELP SUPPORT THE DOLLY PARTON
IMAGINATION LIBRARY & JOIN US FOR

.CHRISTMAS GIFT!.

BINGO!

ECHO

STANFIELD

DEC 10th

DEC 12th

@ City Hall

@ The

Library



6PM-8PM

⋮

**\$5.00
PER CARD**

**:FOR CHILDREN
:AND ADULTS**